

This NewYork-Presbyterian Queens Continuing Medical Education symposium is being held at **Terrace On The Park** in Flushing Meadows Park.

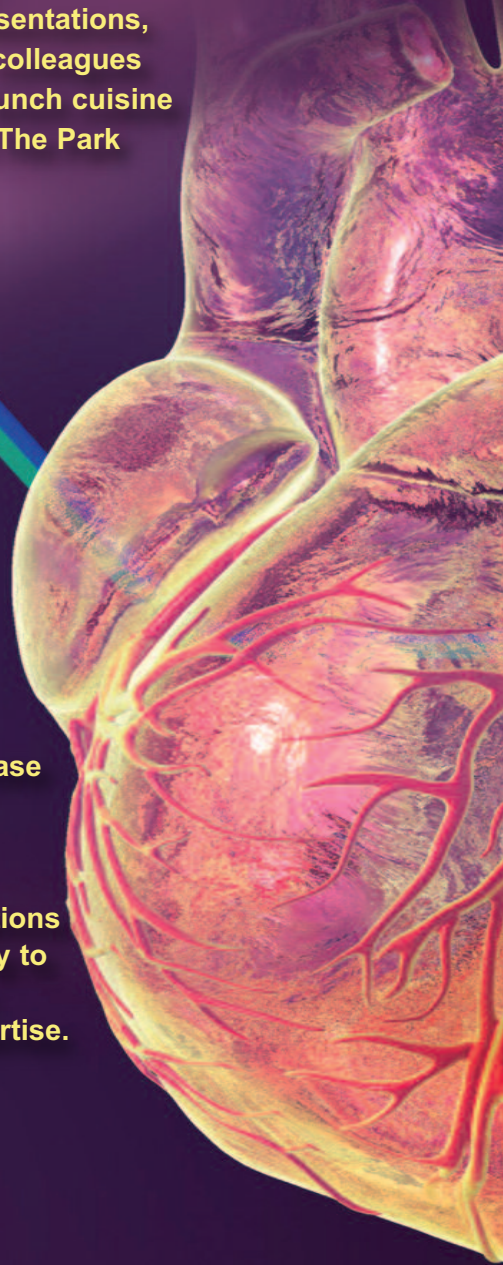
At the conclusion of the presentations, attendees can interact with colleagues while enjoying a hot buffet lunch cuisine prepared by the Terrace On The Park culinary team.

### Symposium Topics

Updates, Innovations and Current Guidelines for the management of:  
Hypertension  
Syncope  
Valvular Heart Disease  
Systolic Heart Failure  
Acute Stroke  
Adult Congenital Heart Disease

### Breakout Session

Interactive Echo, EP and Non-Invasive case presentations provide a unique opportunity to practice skills and enhance clinical knowledge and expertise.



PRESORTED  
FIRST CLASS MAIL  
U.S. POSTAGE  
PAID  
SMITHTOWN, NY  
PERMIT NO. 15

 **NewYork-Presbyterian**  
Queens

Continuing Medical Education  
56-45 Main Street  
Flushing, NY 11355

# CARDIOLOGY UPDATE 2019

## Practice Updates, Breakthroughs, Prevention and Management Options

Saturday, April 27, 2019 at Terrace On The Park

### Program | 4.27.19

7:30 a.m. - 1:15 p.m.

Hot Buffet Lunch

12:15 p.m. - 1:15 p.m.

Terrace On The Park  
52-11 111th Street  
Flushing Meadows Park  
New York, NY

### Program Chair

Sahadeo Daveswar Ramnauth, MD

### Chief, Division of Cardiology

David J. Slotwiner, MD, FACC, FHRS

### To Register

718-670-1419

[www.nypqcme.org](http://www.nypqcme.org)

 **NewYork-Presbyterian**  
Queens

# CARDIOLOGY UPDATE 2019

Practice Updates, Breakthroughs,  
Prevention and Management Options

**Saturday, April 27, 2019**

7:30 a.m. - 1:15 p.m.

## Program Chair

**Sahadeo Daveshwar Ramnauth, MD**

Non-Invasive and Clinical Cardiologist  
NewYork-Presbyterian Queens

**Statement of Need** • Heart disease remains the most common cause of death in men and women in the United States. Advances in cardiovascular medicine and technology evolve at a rapid pace requiring updated guidelines and changes in clinical practice. Physicians and allied health professionals require continuous updates on the most recent guidelines in order to offer their patients state-of-the-art care and innovative treatments. In a busy clinical practice, it can be a challenge to stay abreast with the most recent advances and guidelines. This program will provide physicians and allied health professionals with updates from the latest guidelines in key cardiovascular topics including: Hypertension Guidelines/Syncope Management/Valvular Heart Disease Management: Mitral Disease/Systolic Heart Failure Management Guidelines/Late-Breaking Clinical Trials results from the March, 2019 American College of Cardiology Scientific Sessions/Current Obesity Management vs. Updates in Stroke Management. Program attendees will have a unique opportunity to review challenging clinical cases and to ask questions in a group setting with a panel of experts.

**Target Audience** • Primary care physicians, cardiologists, fellows, residents, medical students, physician assistants, nurse practitioners, registered nurses, and all cardiac health care providers.

**Educational Objectives** • It is intended that NewYork-Presbyterian Queens CME activity will lead to improved patient care. At the conclusion of this program, participants will be able to:

- Describe the updated management of hypertension and the latest addition to available therapeutic options and its applicability to clinical practice.
- Describe the current recommendations for the diagnosis and management of syncope.
- Specify indications for transcatheter mitral valve intervention and appropriate indications for referral to a valve team from an outpatient setting.
- Describe current systolic heart failure management for everyday clinical practice.
- Discuss the latest recommendations from the American College of Cardiology Annual Meeting.
- Describe the current management of acute stroke and the latest recommendations.

**Accreditation** • NewYork-Presbyterian Queens is accredited by the Medical Society of the State of New York to provide continuing medical education for physicians.

NewYork-Presbyterian Queens designates this live activity for a maximum of **3.75 AMA PRA Category 1 Credit(s)**™. Physicians should claim only the credit commensurate with the extent of their participation in the activity.

**Disclosure Statement** • NewYork-Presbyterian Queens relies upon planners and faculty participants in its CME activities to provide educational information that is objective and free of bias. In this spirit, and in accordance with the guidelines of MSSNY and ACCME, all speakers and planners for CME activities must disclose any relevant financial relationships with commercial interests whose products, devices or services may be discussed in the content of a CME activity that might be perceived as a real or apparent conflict of interest. Any discussion of investigational or unlabeled uses of a product will be identified.

**Registration Fees** • \$50 Physicians/\$25 General Registrants/No Fee Physicians-in-training, NYP Queens Physicians & Staff (copy of NYP Queens ID required with registration). Fee includes continental breakfast, hot buffet lunch and course materials.

**Cancellation Policy** • Refunds will only be made upon receipt of written notification a minimum of five work days prior to the session.

**Special Needs** • Participants with disabilities or special needs are requested to contact the Office of Continuing Medical Education at 718-670-1419.

**To Register/Information** • Ms. Pamela Williams, Director, Continuing Medical Education  
tel: 718-670-1419 • fax: 718-661-7925 • email: pgw9001@nyp.org • **Register Online:** [www.nypqcme.org](http://www.nypqcme.org)



**Terrace On The Park**  
52-11 111th Street  
Flushing Meadows Park  
New York, NY

## AGENDA

**7:30 a.m. - 8:00 a.m.**

Registration and  
Continental Breakfast

**8:00 a.m. - 8:15 a.m.**

### Introduction

**Chairman, Department of Medicine  
NewYork-Presbyterian Queens**

**Joseph T. Cooke, MD**

Associate Professor of Clinical Medicine  
Weill Cornell Medicine

**Chief, Division of Cardiology  
NewYork-Presbyterian Queens**

**David J. Slotwiner, MD, FACC, FHRS**

Assistant Professor of Clinical Medicine, Healthcare  
Policy and Research, Weill Cornell Medicine  
Attending Cardiac Electrophysiologist  
NewYork-Presbyterian Queens

**8:15 a.m. - 8:45 a.m.**

**Update on the Management  
of Hypertension**

**Phyllis August, MD, MPH**

Ralph A. Baer MD Professor of Research in Medicine  
Director, Weill Cornell Hypertension Center  
Director, Theresa and Eugene M. Lang Center  
for Research and Education  
NewYork-Presbyterian Queens

**8:45 a.m. - 9:15 a.m.**

**Update on the Management  
of Syncope**

**JoonHyuk Kim, MD, FACC**

Attending, Cardiac Electrophysiologist  
NewYork-Presbyterian Queens

**9:15 a.m. - 9:45 a.m.**

**Valvular Heart Disease:  
Mitral Disease,  
Transcatheter Intervention**

**Hafiz G. Hussain, MD**

Attending, Interventional Cardiologist  
NewYork-Presbyterian Queens

**9:45 a.m. - 10:00 a.m.**

**Break**

**10:00 a.m. - 10:30 a.m.**

**Breakout Session**

▶ **Echocardiography  
Interactive  
Case Presentation**

▶ **EP Interactive  
Case Presentation**

▶ **Non-Invasive  
Interactive Cases**



**10:30 a.m. - 11:00 a.m.**

**Systolic Heart Failure  
and Management for Daily  
Clinical Practice**

**Udhay Krishnan, MD**

Assistant Professor of Medicine, Weill Cornell Medicine  
Assistant Attending Physician, Division of Cardiology  
Advanced Heart Failure, NewYork-Presbyterian

**11:00 a.m. - 11:30 a.m.**

**Current Management  
of Acute Stroke**

**Gary L. Bernardini, MD, PhD**

Professor and Chair  
Department of Neurology, NewYork-Presbyterian Queens  
Vice-Chair, Department of Neurology  
Weill Cornell Medicine

**11:30 a.m. - 12:00 p.m.**

**Adult Congenital Heart Disease  
for General Cardiology**

**Harsimran S. Singh, MD, MSc,  
FACC, FSCAI**

David S. Blumenthal Assistant Professor of Medicine  
Director of Adult Congenital Heart Disease  
Weill Cornell Medicine  
Director of the Cardiovascular Fellowship  
Training Program  
NewYork-Presbyterian/Weill Cornell Medical Center

**12:00 p.m. - 12:15 p.m.**

**Panel Discussion/ Q&A  
Closing Remarks**

**12:15 p.m. - 1:15 p.m.**

**Hot Buffet Lunch**

Prepared by the Terrace On The Park culinary team.

## REGISTRATION

# CARDIOLOGY UPDATE 2019

Practice Updates, Breakthroughs,  
Prevention and Management Options

### THREE EASY WAYS TO REGISTER:

- 1 **Online:** Go to website: [www.nypqcme.org](http://www.nypqcme.org) and pay via credit card
- 2 **Fax:** This form with credit card information to: **718.661.7925**
- 3 **Mail:** This form with a check made payable to:  
**NYP Queens-Continuing Medical Education**  
**Mail to:** Pamela Williams, Director, Continuing Medical Education  
NewYork-Presbyterian Queens  
56-45 Main Street, Flushing, NY 11355

Questions?  
**718-670-1419**

### REGISTRATION FEE - Please check one.

**Fee includes continental breakfast, hot buffet lunch and course materials.**

- \$50/Physician
- \$25/General Registrant
- No Fee/Physicians-in-training, NYP Queens Physicians & Staff**  
(copy of ID required, pre-registration requested)

Last Name \_\_\_\_\_

First Name \_\_\_\_\_

MD \_\_\_\_\_ General Registrant \_\_\_\_\_

Mailing Address \_\_\_\_\_

City/State/Zip \_\_\_\_\_

Phone \_\_\_\_\_ Fax \_\_\_\_\_

Email \_\_\_\_\_

Affiliation \_\_\_\_\_

**Yes. I wish to pay by credit card. Card holder name ▼**

Charge \$ \_\_\_\_\_ to my  VISA  MasterCard

American Express  Discover Security Code \_\_\_\_\_

Card Number \_\_\_\_\_

Expiration Date \_\_\_\_ / \_\_\_\_ / \_\_\_\_

Authorizing Signature \_\_\_\_\_

**NewYork-Presbyterian  
Queens**